

Lynx Autonomous ATV

by **cogniteam**

Autonomous ATV

# Lynx

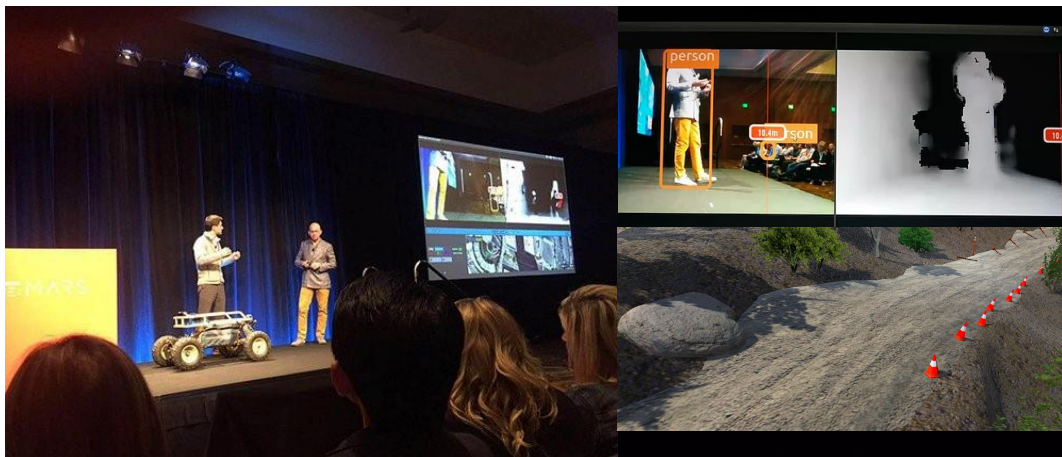
## Outdoor autonomous ATV


Lynx is an R&D autonomous all terrain vehicle (ATV) capable of powering, carrying and interfacing various payloads.

Lynx is capable of powerful computations, including Mapping (SLAM), Localization, Path Planning, Exploration, Waypoint Driving, Obstacle Avoidance and classification using HW supported VPU - all running on board the robot.

For outdoor environments, Lynx is equipped with GPS, a motor encoder and an IMU which enables high location accuracy and PID control for travelling at up to 40 km/h.

Contact us: [sales@cogniteam.com](mailto:sales@cogniteam.com)



Power	<ul style="list-style-type: none"><li>• 3H operation on a single charge</li><li>• PDU</li><li>• 5v/12v/24v regulated</li></ul>
Computing	<ul style="list-style-type: none"><li>• ARM or Intel based</li><li>• Optional BOXER-8240AI (jetson agx)</li></ul>
Sensors	<ul style="list-style-type: none"><li>• Brushless Motor + Encoder</li><li>• Intel d455 stereo vision camera</li><li>• GPS</li><li>• Optional 3D Lidar</li></ul>
Software	<ul style="list-style-type: none"><li>• ROS1/ROS2 drivers</li><li>• Nimbus pre-installed</li><li>• Simulation</li></ul> 
Connectivity	<ul style="list-style-type: none"><li>• AC Wifi</li><li>• RF control</li></ul>
Dimensions	<ul style="list-style-type: none"><li>• Size 85 x 130 x 60 cm (WxLxH)</li><li>• 100kg weight</li><li>• 120Kg payload</li><li>• Max speed: 40 Km/h</li></ul>